



s c e e n
solution / éclairage / professionnel

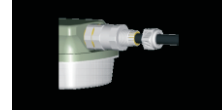
ORCA T8

Kit chantier - Prêt à poser - Livré avec tubes /840

Fluorescents Industriels Etanches



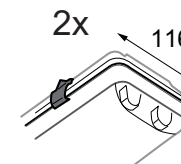
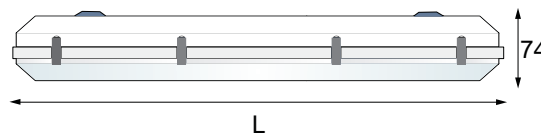
- Clips inox



- Kit chantier

DESCRIPTION TECHNIQUE

- Corps en polycarbonate.
- Vasque moulée en polycarbonate.
- Bornier rapide 3 pôles, Clips Inox 304
- Tension 230V 50Hz.
- Conformes aux normes CEI 60598-1
- CEI EN 60598-2-2 (NF C710xx).

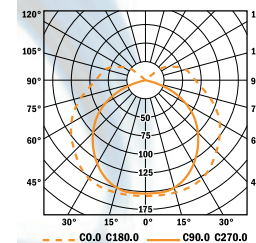


SOURCES ET ÉQUIPEMENT

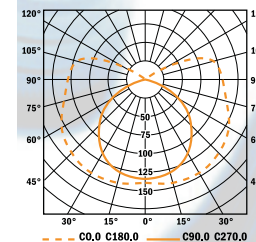
2x 36W L = 1215 mm
2x 58W L = 1515 mm



Ballast électronique.



ORCA T8 236



ORCA T8 258